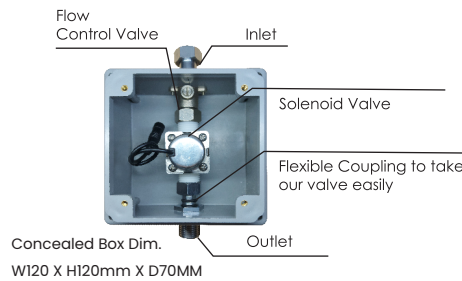
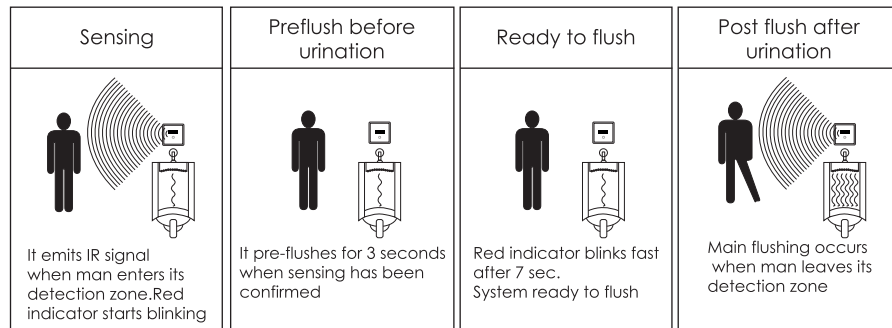


OPERATION AND WORKING :-



PRECAUTION :-



CUSTOMER SUPPORT :-

AFTER SALES SERVICE

Our Customer Support Team is Comprehensively trained to provide help and advice, spare parts or a service visit.

SPARE PARTS

We maintain an extensive stock of spares and aim to have functional parts available for ten years from the date of final manufacture of the product. Spares can be purchased from approved stockists or merchants (locations on request) or direct from our Customer Support Department. Spares direct will normally be dispatched within two working days.

NOTE

In the interest of safety, spares requiring exposure to mains voltages can only be sent to qualified persons.

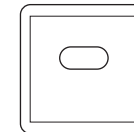
SERVICE

Our Customer Support Team is available to provide quality service at a reasonable cost.

A PRODUCT PROUDLY DESIGNED & MANUFACTURED IN INDIA

Bharat Photon[®]
where sensors mean 'India'

RECESSED AUTOMATIC URINAL FLUSHER



W120 X H120mm



INSTALLATION & OPERATION MANUAL

1. Designed and manufactured in India to automatically flush urinal pot after every use.
2. An essential & dependable component in every washroom to maintain proper hygiene.
3. Simultaneously instrumental to help reduce water wastage.
4. Intelligent flushing ensures your washroom remains stink free.
5. Recovers its cost by saving significant amount of water as compared to washroom with continuously running flushing.
6. Tried and tested easily serviceable & lifetime repairable product, very adaptive to robust Indian conditions.
7. Essential for green buildings and must for every public washroom.
8. Reduces carbon footprint & saves considerable amount of operational costs as compared to conventional flushing techniques.

SPECIFICATIONS :-

MODEL	AUTOMATIC URINAL SENSOR
POWER	AC 220V 50Hz / DC 6V - 4XAA Alkaline Batteries
SENSING RANGE	Upto 500mm Adjustable
WATER PRESSURE	0.02 Mpa - 0.8 Mpa
FLUSH TIME	7-8 Seconds Postflush
INLET/ OUTLET	G1/2" (Dn15)
SETTINGS	Sensing range (or detection zone) adjustment pot given at sensor ▶ By default range is preset at optimum value ▶ Alter setting only if necessary

INSTALLATION PROCEDURE :-

- Clean the pipeline by running 1-2 bucket water until dust particles like cement pieces or thread etc. are washed away.
 - Unscrew the front plastic cover and grout the concealed box with inbuilt valve inside the wall with bottom at approximately 4.5 feet height from the floor.
 - Now install the water pipeline to each urinal pot through the inlet and outlet of concealed box.
 - Screw the front plastic cover on the box until the site is prepared for final connection & keep the sensor separately in the packing to ensure the safety of sensor & items inside the wall box.
 - Complete the finishing & do tiling up to the level of tile marker in concealed box
- Now the sensor is ready to install as directed below :-

- Install 4XAA size Alkaline batteries into battery compartment & connect the battery pack to sensor or AC/DC adaptor as per the stickers on the leads.
 - Connect the solenoid valve lead of sensor to solenoid valve.
 - Place the battery pack inside the concealed box at proper place.
 - Now take out front magnetic S.S. sheet of the sensor through the vacuum sucker to reach the four corner screws behind it.
- Screw the sensor properly to the wall concealed box and place back the magnetic sheet on the front.

YOUR BATTERY OPERATED AUTO FLUSH SENSOR FOR URINAL IS READY FOR USE NOW

SPECIAL FEATURES :

- Deodorize feature of 24 hrs. voluntarily flush if no use
- Polycarbonate ABS body Rustfree Concealed box
- Easy to Install - No breaking of walls or tiles for replacing spare parts
- Live Indicators for sensing & flush modes give immersive experience for use & troubleshooting
- False flush protection as system will not flush before 7 seconds continuous sensing
- Sense to respect feature that stops ongoing flushing if senses another person in queue to avoid splash

IN-BOX CONTENTS



Sensor Plate



ABS Wall Mounted With Inbuilt Solenoid Valve



Battery Pack



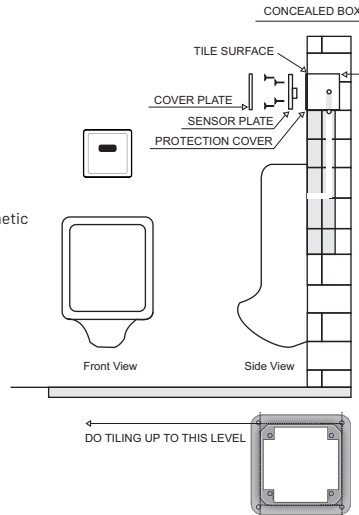
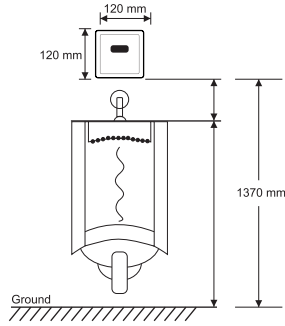
AC/DC Adapter



Protective Cover With Installation Kit



Remote (Optional)



AUTOMATIC URINAL FLUSHER TROUBLESHOOT FLOWCHART

